

### Vidaplate® V37

#### Base Material

Vidaplate is a clad plate manufactured by welding an abrasion resistant material to a steel base. The standard base material is mild steel; however, this can be changed to suit your operating environment.

#### Overlay Material

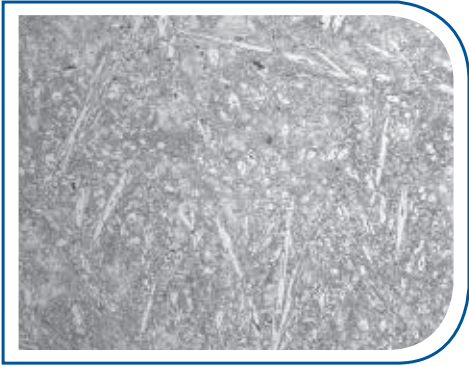
The V37 overlay material is a complex chromium carbide iron that is based on AS2576-2455. The microstructure of this material consists of primary  $M_7C_3$  carbides in a complex carbide austenite matrix. The toughness of the material is improved by the formation of nodular complex carbides leading to a reduction in the size of acicular  $M_7C_3$  type carbides and inter-carbide spacing.

#### Typical Properties

Bulk Hardness:	620 HV <sub>50</sub>
Typical Carbide Hardness:	1500 HV <sub>0.5</sub>
Volume Fraction Primary Carbides:	30%

#### Welding

The base material can be welded with standard mild steel or low hydrogen welding consumables with no pre-heating required. However, care should be taken to avoid contacting the overlay material.



V37 microstructure at 100x magnification



Typical V37 finish



Truck bed lined with Vidaplate V37 and Bradken Q&T

# BRADKEN

## PRODUCTS

### Vidaplate® V37

#### Cutting, Forming and Fabrication

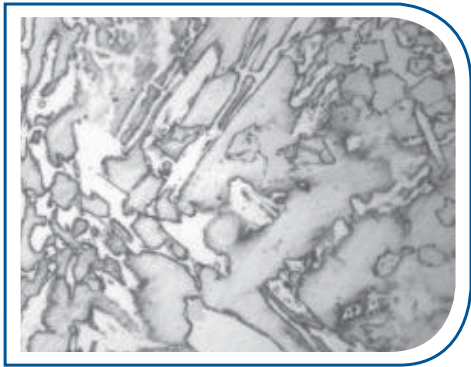
Plasma cutting is the recommended method for cutting Vidaplate. It is preferable to cut Vidaplate from the backing plate side to ensure a clean edge and to prevent carbide contamination. Vidaplate can also be easily cold formed into almost any shape that mild steel can, by pinch rolls or hydraulic press brake.

The steel backing plate provides Vidaplate with structural integrity, thus entire structures can be fabricated from Vidaplate. Bradken has the capabilities to manufacture such structures or to supply cut and formed, ready-to-go wear liners.

#### Services & Applications

Vidaplate V37 is suited for applications involving high abrasion and high impact. Typical uses include:

- Sizing Screens
- Ball mill liner plates
- Dump truck tray linings
- Deflector Screens
- Chute liners
- Bin & hopper liners
- Screw Feeders



V37 microstructure at 1000x magnification



Screw feeder lined with Vidaplate V37



Screen house lined with Vidaplate V37

## Vidaplate®

For more information contact Bradken at [wpbsales@bradken.com.au](mailto:wpbsales@bradken.com.au)

3 BKM SP MKT  
Rev. 2  
Issue date – Nov 2008

170 Railway Parade Bassendean WA 6054 Australia  
T +61 8 9449 8300 F +61 8 9449 8334  
W [bradken.com.au](http://bradken.com.au)